



Camellia-Azalea Guide



Have the best success with these classic shade plants by following these guidelines!

Soil & Drainage

Camellias and Azaleas need a soil with good drainage and lots of organic material. Plenty of organic material will help keep the soil loose and slightly acidic. Use up to *two bags* of **Master Nursery Planting Mix**

per plant for new plantings. For group plantings, you can also dig a trench 12"-15" deep and replace the soil with **Planting Mix** and **Mini or Micro Bark**.

Soil Preparation

Plant in a large, wide hole filled with **Planting Mix**. We recommend *at least one and up to two* complete 2cu bag per plant-one gallon or five gallon size.

Use **Master Nursery Master Start** according to directions for new plantings. This "baby food" will start new roots to encourage strong healthy growth for flowering.

You can also add **Master's Iron Plus** for extra Iron at this time as well.

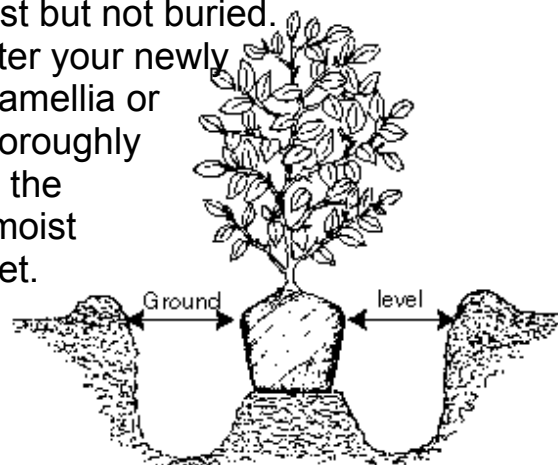


Planting & Watering

Plant so the top of the root ball is higher than the surrounding soil. This is contrary to most plantings where the top of the root ball is even with the soil level. These plants have shallow surface roots that do not like to be buried.

Top dress with a mulch of **Master's Gold Rush or Bark** to keep the surface roots moist but not buried.

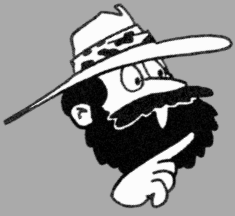
Water your newly planted camellia or azalea thoroughly and keep the planting moist but not wet.



Fertilizing

Feed with **Master Nursery Azalea Camellia Food** monthly from March-June. August-December stimulate new buds with **Master Nursery Master Bloom**.
(Continued on back.)





Camellia-Azalea Guide



Container Growing

Camellias and Azaleas grow well in containers. As a general rule, plant gallon size containers in 12"-14" pots, and five gallon sized plants in tubs or pots 16"-18".



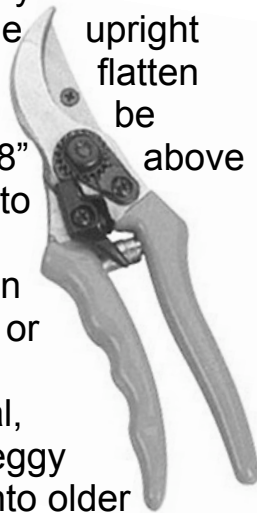
Use our **Master's Camellia Azalea Planting Mix and Master Start** (follow container directions on fertilizer).

Pruning

Most shaping and pruning on Camellias and Azaleas should be done after bloom and after chance of frost.

On camellias, cut dead or weak wood and thin when growth is so thick the blooms can not open properly. Shorten lower branches to encourage upright growth, or cut top growth to flatten lanky shrubs. Cuts should be made approximately 1/4"-1/8" above a node or bud scar in order to encourage new growth.

Evergreen Azaleas can be left to their natural forms or even sheared into compact hedges. Most keep a natural, compact look. Occasional leggy branches can be cut back into older growth. Azaleas can be pinched to new growth between end of bloom into July to encourage correct shape and thick, bushy growth.



Pests and Diseases

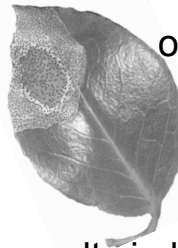
Pest problems common to Camellias and Azaleas are scale and aphid.

Pest Fighter Year Round Spray

Oil or Neem Oil can be applied when weather is between 45° and 80°F to control these pests. Remember that proper application is essential for control.

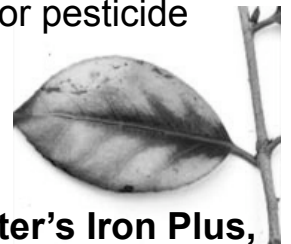


Sun damage or drying out are also common ailments. Sun damage on Camellias looks like yellowing or scorched patches on the center of the leaves. Drying out results in brown, dry edges on both Camellias and Azaleas.

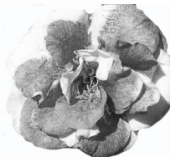


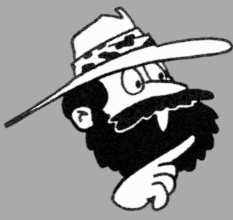
Brown edges, extreme leaf drop or burn spots can also be caused by over or improper over fertilization or pesticide use.

Excessive yellowing of the leaves with green veins are signs of Iron deficiency. Treat with **Master's Iron Plus, Chelated Iron or FST**.



Camellias are also prone to Camellia petal blight. Flowers rapidly turn ugly brown. Prevention is the most reliable form of control. Rake up and pick spent flowers and dispose of them promptly away from the plant. Remove mulch and replace with fresh material to prevent harboring spores.





Camellia Varieties



Note: All varieties are subject to availability.

Sasanqua Camellia

Whether planted in sun or shade, these camellias are hardy fall and winter bloomers.

Keep in mind that if planted in sun, do not plant near reflective surfaces like pools or white walls. Follow our Camellia-Azalea Planting Guide.

Bonanza-Semi-double, rich scarlet pink. Low spreading 4'-5'.

Cleopatra-Semi-double, rose pink. Compact 4'-6'.

Hana Jiman-Single, large white with pink edge. Medium 6'-10'.

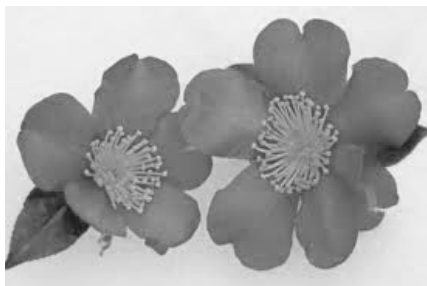
Kanjiro-Semi-double, rose pink edged with rose-red. Upright 6'-10'.

Setsugekka-Semi-double, large ruffled white. Upright and compact 6'-8'.

Shishi Gashira (hiemalis)-Semi-double bright cherry pink. Low spreading 2'-6'.

Showa-No-Sakae-Semi-double soft pink. Low spreading 2'-6'.

Yuletide-Single fiery red bloom with bright yellow stamens. Upright to 10'. Pictured below.



Japonica Camellia

These classic shade plants' shiny dark green leaves and plethora of blooms in spring make Japonica Camellias a must for many gardeners.

Unlike Sasanquas, Japonica Camellias prefer shade to morning sun-perfect for a north or east facing garden.

Carter's Sunburst-Semi-double, medium pink bloom. Compact 6'-8'.

Chandler's Elegans-Anemone form, pink blooms with white spotted accent petals and yellow stamens. Compact 3'-6'.

Daikagura-Peony form, pink and white. Compact 6'-8'.

Debutante-Peony form, large light pink blooms. Tall from 8'-12', and 4'-8' wide.

Julia Drayton-Double rose form, reddish pink blooms. Tall upright, 10'-12'.

Kramer's Supreme-Peony form, reddish-orange. Compact 6'-12'.

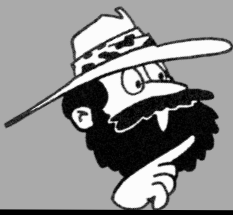
Kumasaka-Medium to large peony form, bright pink with white striping. Tall upright, 10'-12'.

Magnoliiflora-Single fiery red bloom with bright yellow stamens. Upright to 10'.

Marie Bracey-Semi-double, large coral rose. Tall 6'-8' plus.

Taylor's Perfection-Semi-double, light pink. Compact 4'-8'.

Rev. Mar 2011



Azalea Varieties



Note: All varieties are subject to availability.

Azalea Southern Indica

Brilliant/Pride of Dorking-Brilliant Carmine Red. Vigorous, tall, fast grower. Use for massing or specimens.

Little John-Burgundy foliage and rarely red flowers. Dense, rounded up to 6' tall.

Mistral-Pink. Lush, mounded form, covered with extra large blooms in season. Spreading evergreen, use as hedge, screen or massed planting.

Phoenicia/Formosa-Rose Purple. 4'-8' tall and wide.

Pink Lace-Pink. Medium-sized shrubs, 4'-6' high, well-branched and spreading with medium-sized leaves. Floriferous habit. Blooming ranges from early to mid-late season.

Southern Charm-Watermelon Pink. 4'-8' tall and wide.

White Lace-Medium-sized shrubs, 4'-6' high, well-branched and spreading with medium-sized leaves. Floriferous habit.

Azalea Brooks Hybrids

Brooks Hybrid Madonna-White. Developed in Modesto for heat and drought tolerance, compact form and large flowers. Medium-sized, to 4'-6' tall. Bloom time: mid-season to late.

Brooks Hybrid Red Bird/Red Wing/Red Ruffles-Red fuchsia flowers. Developed in Modesto for heat and drought tolerance, compact form and large flowers. Medium-sized, to 4'-6' tall. Mid-season to late.

Azalea Rutherford Hybrids

Rutherford Alaska-White with Chartreuse blotch. Medium sized blossoms. Medium-sized shrubs, 4'-6' high, spreading, compact, and floriferous.

Rutherford Constance-Light Orchid Pink. Medium sized blossoms. Medium-sized shrubs, 4'-6' high, spreading, compact, and floriferous.

Rutherford L J Bobbinik-Orchid Pink. Medium sized blossoms. Medium-sized shrubs, 4'-6' high, spreading, compact, and floriferous.

Azalea Satsuki Hybrids

Satsuki Gumpo Pink-Rose Pink. Grows 2 ft. tall, 3 ft. wide. Dense foliage and single rose pink flowers with ruffled edges. Late spring.

Satsuki Gumpo White-White. Grows 2 ft. tall, 3 ft. wide. Late flowering variety with large, single bright white blooms with occasional reddish pink flecks.

Satsuki Korin-Dark Pink. Late April-May. Small foliage. Compact habit.

Satsuki Minato-2" White with lavender-pink margins. Early May. Small, dark green foliage. Compact habit.

Satsuki Okusatsuki-Pink. Compact.

